

First Hill Public Meeting

January 2020

Agenda

- Harborview Capital Planning Leadership Group Briefing - Kelli Carroll & Leslie Harper-Miles
- Black Farmers Collective - Ray Williams
- Terry Avenue Redevelopment Design & Community Engagement – Jonathan Morley, Berger Partnership & Rico Quirindongo, DLR Group
- FHIA Board of Trustees Election
- FHIA Update



FIRST HILL
IMPROVEMENT ASSOCIATION



**BLACK FARMERS
COLLECTIVE**

Black Farmers Collective

Yes Farm

Ray Williams

Seattle Urban Farmer

Who we are

- We are a group of Black food system professionals: builders, growers, preparers, and eaters
- We are developing an urban farm and innovation center in cooperation with the SHA, WDOT, and the Yesler community

Black Farmers Collective



Why this project

- We believe one of the best ways to improve your mental and physical health is to grow some of your own food.
- Serve as an anchor to keep an African American presence in central Seattle
- Facilitate sharing of cultural traditions of the many ethnic communities in the neighborhood

Black Farmers Collective; changing the image of farming

Positive

- History of growing skills
- Great contributions
- Energy, dedication to community, and resiliency
- Redefining urban farming

Negative

- Concerted effort to move Black people off the land
- Image of farming as “slave work”
- Loss of skills as systems have impacted Black community

How to change the narrative?

- Introduce role models
- Share history
- Create opportunities for a safe space
- Work the land for self
- Develop leadership
- Empower youth

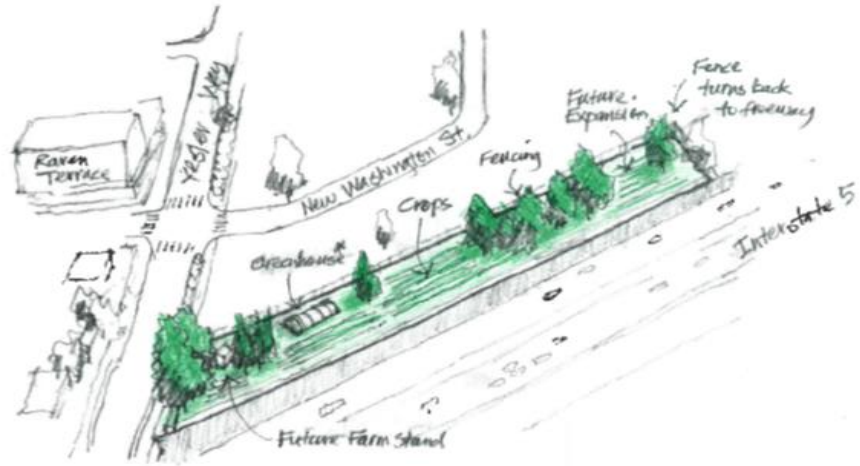
Yes Farm

~1 acre in central Seattle

- Great southwest exposure
- SHA has brought water to the site
- Pedestrian access from Yesler Way

Cooperative farm

- Grow food for local market
- Value added products
- Training and education
- Community Engagement



* Greenhouse is a hoop-style with no-recirculation

Conceptual Rendering
Urban Farm

Urban Farm at Yesler Way and I-5

Yes Farm

Start



View from Yesler Way



Our first projects

Engaging neighbors



Developing student learning site



Our collaborators and partners

- Earth Corps
- Rebuilding Together-Seattle
- Seattle U
- U of Washington
- Antioch's Urban Environmental Education
- Clean Greens Farm and Market
- Black Dollar Days Task Force
- Seattle Farm Coop
- Seattle Park's Urban Food Systems

Seattle U Sustainability Class

Field work-trash collection



Site class time



i-Urban teen after school program— science education

**Learning about bioswales that
clean runoff**



**Starting construction of a
demonstration project**



Earth Corps –Building garden space for residents

Working on project



Wrapping up after a long day



Future projects:

Improvement of Yesler St. entrance for beauty and security



Looking east along Yesler
Way



Downtown from farm

Engaging our new neighbor

SECTION 04 / EDG-1 Response

Phase 1 + 2 Views



Phase 1

- 23 story apartment building as new neighbor
- What will impact be?
- How to mitigate and adapt

Why you should support our project

- Promote health equity and food access
- Create urban oasis for people and wildlife
- Create space for community
- Develop model for other projects
- Model community/organization collaboration

Support Clean Greens
Farm & Market at
Harborview





Thank you

Ray Williams

Black Farmers Collective

blackfarmerscollective@gmail.com

TERRY AVENUE

COMMUNITY VISION & SITE DESIGN

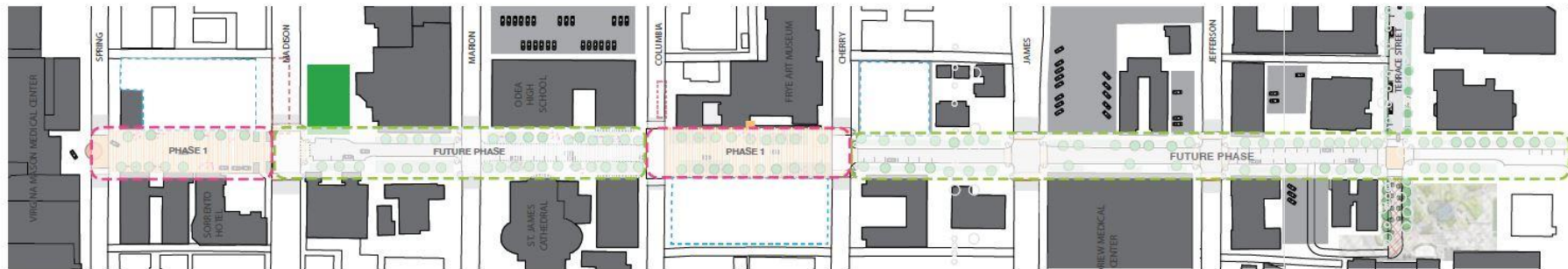
DEVELOPMENT

1. TEAM INTRODUCTION

3. OVERALL SCHEDULE & UPCOMING OUTREACH

2. PROJECT AREA & OPPORTUNITY

4. OUTCOMES & FINAL DELIVERABLES



Terry Avenue Phase 1

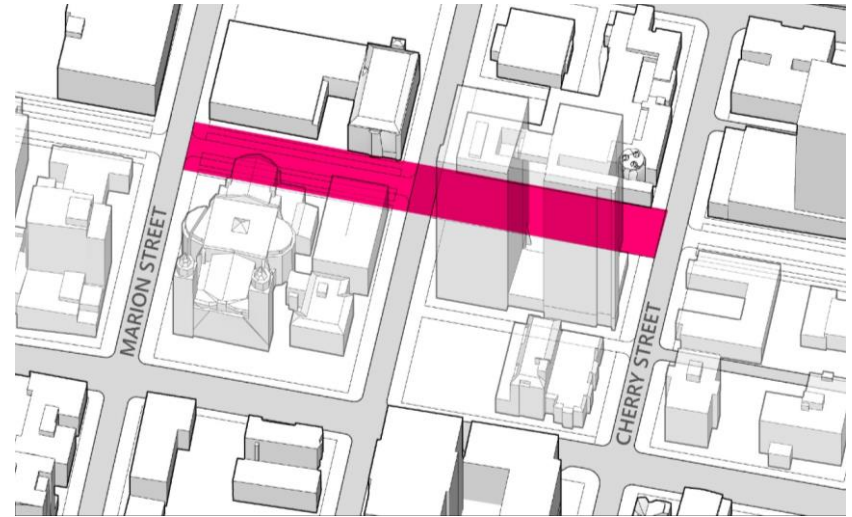


Terry Avenue Future Phasing

PROJECT AREA & OPPORTUNITY

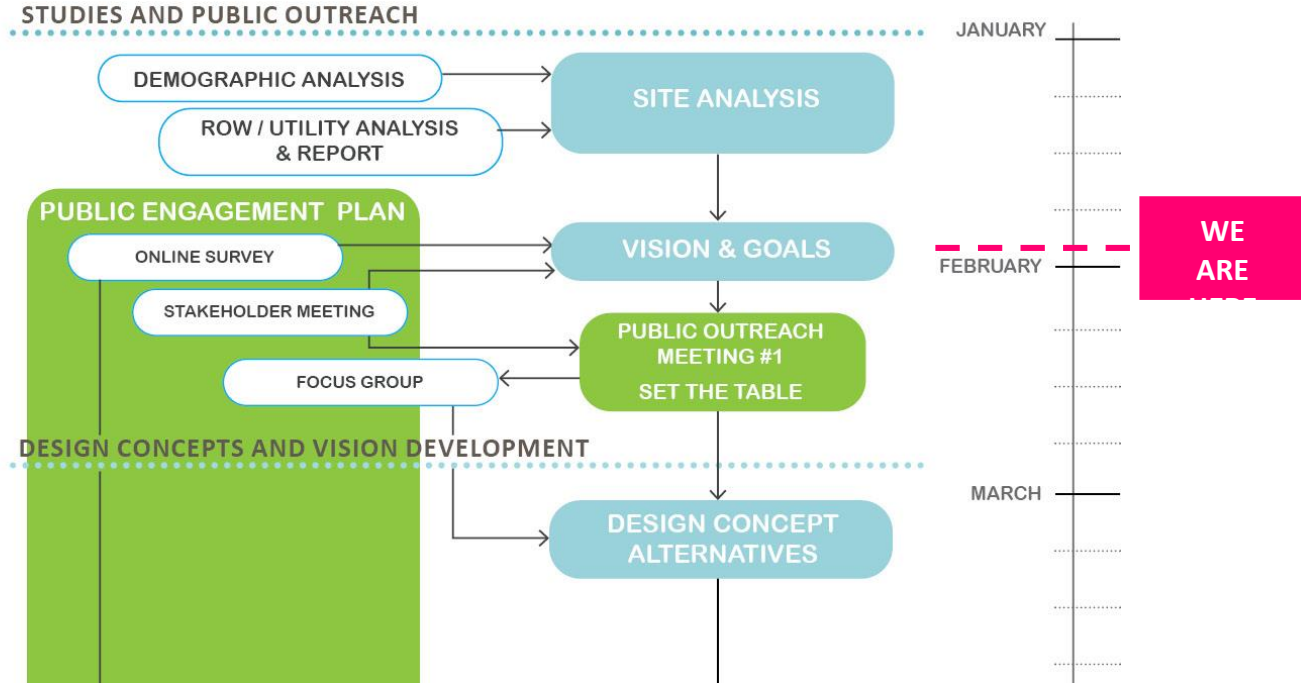


TERRY AVENUE CONTEXT

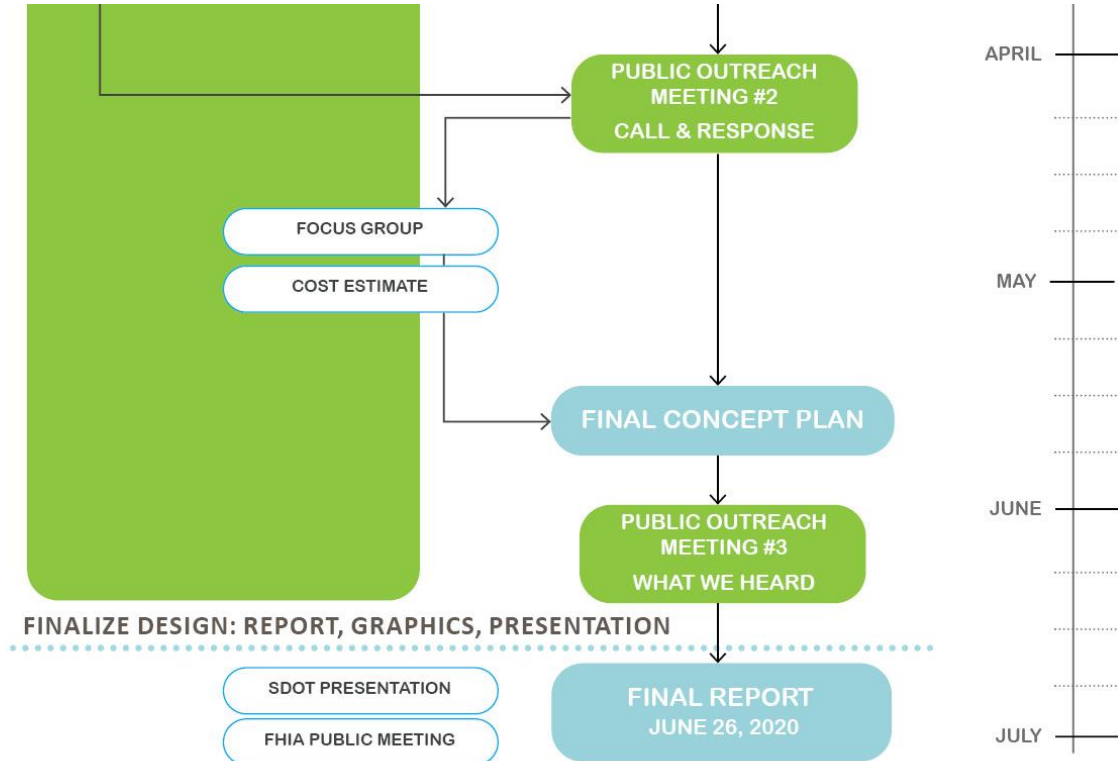


PHASE 1

OVERALL SCHEDULE & UPCOMING OUTREACH



OVERALL SCHEDULE & UPCOMING OUTREACH



OUTREACH MEETING #1

TERRY AVENUE COMMUNITY VISION + SITE DEVELOPMENT

The Terry Avenue Vision Process and Site Development Plan is a community visioning and concept design process for the design of Terry Avenue between Cherry and Marion Streets. Building upon work completed through the 2015 First Hill Public Realm Action Plan (PRAP), the community-driven design will serve as a catalyst and template for the overall Terry Avenue redevelopment project.



**Outreach Event #1:
Set the Table**

Thursday, Feb 13, 2020
5:30 - 7:30PM

FRYE ART MUSEUM
704 Terry Avenue, Seattle, WA

Free & open to all!
RSVP info below

OUTCOMES AND FINAL DELIVERABLES

VISION DEVELOPMENT

DESIGN CONCEPTS

FINAL DESIGN
(30% CONCEPT PLAN)

NEXT STEPS



2020 FHIA Board of Trustees Election

Trustees shall be elected at the Annual Meeting of the Corporation by the affirmative vote of a majority of the dues-paying members present at the meeting. No member votes by proxy will be permitted. FHIA Board Members serve two year terms with a maximum of four consecutive terms for most positions. Please vote aye or nay for the following slate of candidates:

2020 FHIA Board Slate

Betsy Braun, Virginia Mason Medical Center

Ted Klainer, Harborview Medical Center

Heather Hutchison, First Hill Resident

Bob Terrell, First Hill Resident

Sherry Williams, Swedish Medical Center

Eli Lemanski, Horizon House

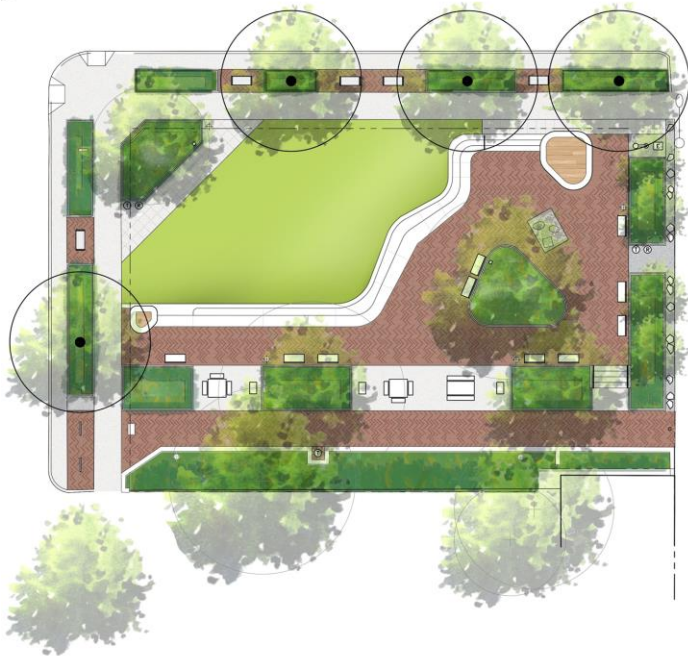
Danielle Nouné, First Hill Resident

Alex Zeiler, Frye Art Museum

Bo Scarim, Plymouth Housing

John Carrico, First Hill Resident, NW Fitness

First Hill Park



First Hill Park



First Hill Park Artist Residency



THANK YOU FOR YOUR DONATIONS

Throughout November and December, FHIA collected donations from the First Hill community for our homeless neighbors. We worked with First Hill Homeless Outreach Coordinator Sara Mar in getting the word out and collecting donations. Through your generous support, we collected over 1,500 items! With so many items to give away, we decided to host a free shop at the Yesler Community Center. Shoppers were able to take what they needed, and we were able to give almost everything away! Thank you so much to everyone who was able to donate!