



Curbspace Access Sounding Board meeting – August 2020

SDOT Curbside Management Team
Curbspace Access Sounding Board – August 2020

Meeting agenda

1. Introductions
2. Updates from the Curbside Management Team
 - Paid parking rate changes
 - Uptown Arena curbspace planning
 - Food and curbside priority loading signs
 - Street closures, street café review
 - Parking Enforcement moving to SDOT
3. Updates and questions from Sounding Board



Meeting format

We want to hear from you! Though we're meeting online, but please feel free to actively participate.

During presentations:

- We will screenshare slides
- Please stay on mute
- If you want to chime in or have quick questions as we go, please use the **chat function** or **raise hand function**

Paid parking system update

- Due to COVID pandemic, paid parking system turned off April 4
- Paid parking returned July 13 at 50 cents/hour in all paid areas
- Committed to data-driven approach to rate setting
 - Especially during COVID recovery, want to ensure customer access for businesses, but at lowest hourly rate needed by area and time of day

Parking activity since July 13

Week of:	Avg Daily Paid Transactions /Week	% Change from previous week	% Change from Avg Daily Trans July 2019
August 17-22	22,550	5%	-41%
August 10-15	21,529	2%	-44%
August 3-8	21,029	10%	-45%
July 27-August 1	19,163	10%	-49%
July 20-25	17,480	15%	-53%
July 13-18	15,257		-59%

Data collection and analysis

- Using daily transactions to count paid activity
- Using data sampled from each paid area (some multiple days)
- Occupancy levels used to adjust rates
 - Focus on areas and time bands over 85%

Occupancy results

Paid Parking Area	Subarea	Neighborhood Bucket			Neighborhood Occupancy		
		AM	AFT	PM	AM	Afternoon	PM
12th Avenue		LOW	LOW	LOW	0.57	0.39	0.14
Ballard	Core	LOW	LOW	LOW	0.42	0.46	0.43
Ballard	Edge	LOW	LOW	LOW	0.53	0.51	0.28
Belltown	North	LOW	LOW	LOW	0.53	0.65	0.29
Belltown	South	LOW	HIGH	LOW	0.61	0.87	0.43
Capitol Hill	North	LOW	ON TARGET	LOW	0.67	0.74	0.45
Capitol Hill	South	ON TARGET	ON TARGET	LOW	0.84	0.79	0.32
Cherry Hill		LOW	ON TARGET	LOW	0.67	0.77	0.38
Chinatown/ID	Core	LOW	HIGH	LOW	0.56	1.01	0.58
Chinatown/ID	Edge	ON TARGET	HIGH	LOW	0.71	0.88	0.46
Columbia City		LOW	LOW	LOW	0.29	0.50	0.24
Commercial Core	Financial	LOW	LOW	LOW	0.69	0.45	0.31
Commercial Core	Retail	LOW	ON TARGET	LOW	0.58	0.80	0.23
Commercial Core	Waterfront	LOW	ON TARGET	LOW	0.60	0.78	0.57
Denny Triangle	North	ON TARGET	HIGH	LOW	0.74	1.09	0.59
Denny Triangle	South	ON TARGET	HIGH	LOW	0.71	1.13	0.68

Paid Parking Area	Subarea	Neighborhood Bucket			Neighborhood Occupancy		
		AM	AFT	PM	AM	Afternoon	PM
First Hill		HIGH	HIGH	LOW	1.07	1.01	0.38
Fremont		LOW	LOW	LOW	0.40	0.43	0.31
Green Lake		LOW	ON TARGET	LOW	0.63	0.74	0.65
Pike-Pine		LOW	LOW	LOW	0.58	0.63	0.44
Pioneer Square	Core	LOW	LOW	LOW	0.53	0.68	0.21
Pioneer Square	Edge	LOW	ON TARGET	LOW	0.69	0.74	0.26
Roosevelt		LOW	LOW	LOW	0.50	0.53	0.29
South Lake Union	North	LOW	ON TARGET	ON TARGET	0.69	0.84	0.71
South Lake Union	South	ON TARGET	ON TARGET	LOW	0.78	0.77	0.41
University District	Core	LOW	LOW	LOW	0.52	0.63	0.45
University District	Edge	LOW	ON TARGET	LOW	0.60	0.84	0.38
Uptown	Core	LOW	LOW	LOW	0.45	0.46	0.32
Uptown	Edge	LOW	LOW	LOW	0.63	0.62	0.38
Uptown Triangle		ON TARGET	LOW	LOW	0.84	0.66	0.63
Westlake Ave N North		ON TARGET	ON TARGET	ON TARGET	0.70	0.80	0.75
Westlake Ave N South		LOW	LOW	LOW	0.47	0.65	0.63

Proposed areas for rate changes

		Neighborhood Bucket			Neighborhood Occupancy		
Paid parking area	subarea	AM	AFT	PM	AM	Afternoon	PM
Belltown	South	LOW	HIGH	LOW	0.61	0.87	0.43
Chinatown/ID	Core	LOW	HIGH	LOW	0.56	1.01	0.58
Chinatown/ID	Edge	ON TARGET	HIGH	LOW	0.71	0.88	0.46
Denny Triangle	North	ON TARGET	HIGH	LOW	0.74	1.09	0.59
Denny Triangle	South	ON TARGET	HIGH	LOW	0.71	1.13	0.68
First Hill		HIGH	HIGH	LOW	1.07	1.01	0.38

Proposed new rates

Need to decide - Increase \$1, \$.50 or 1/2 of pre-COVID

Paid parking area	Pre-COVID rate			New Rate		
	AM	AFT	PM	AM	Afternoon	PM
Belltown South		\$3.50				
Chinatown/ID Core		\$5.00				
Chinatown/ID Edge		\$2.50				
Denny Triangle North		\$2.50				
Denny Triangle South		\$5.00				
First Hill	\$5.00	\$5.00				

Analysis - Questions

Many areas have relatively low occupancy - especially in evening
- likely affected by continued closure and low capacity requirements

Different peak times with many people working from home - going out to lunch?

Weekly activity/transactions growing but not to pre-COVID levels, even at \$0.50/hour

Questions or comments?

Draft Uptown Arena Curbspace Planning

- Climate Pledge Arena opening in Fall 2021. Up to 250 events/year (eventually) with over 10,000 attendees – want to avoid potential congestion with transportation and curbspace management.
- Potential new curbspace treatments:
 - Expand existing RPZ; expand existing paid parking to additional commercial/retail blocks; implement event-rate paid parking
- Neighborhood engagement throughout rest of 2020
- Take the survey www.surveymonkey.com/r/UptownAccess (opens 8/27) to provide feedback!
- More info at www.seattle.gov/transportation/uptownaccess

Food and Curbside Priority Zones - Update

Food Pick-Up Priority 3 min Zones

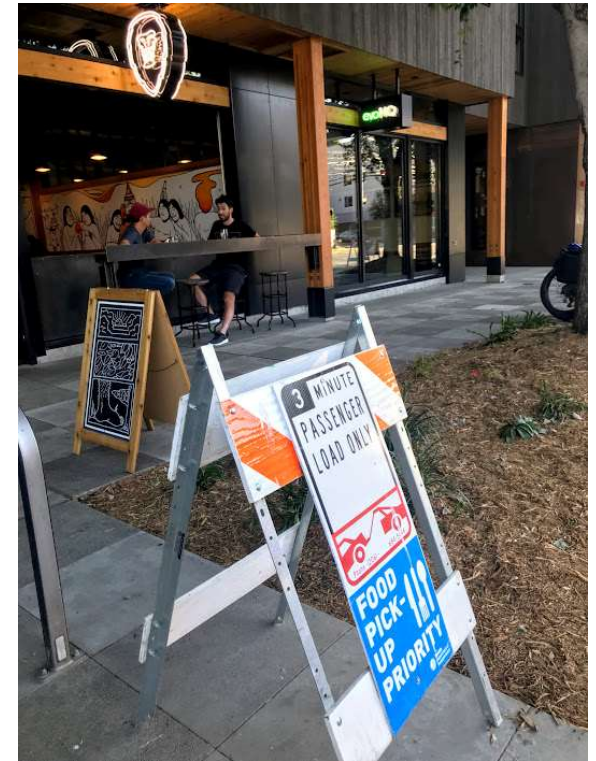
- 925 signs
- 520 addresses

Curbside Pick-Up Priority 15-min Zones

- 105 signs
- 65 addresses

Requests? Call 206-684-ROAD

Working on making permanent where appropriate



Street closures / Street Café reviews

Our team is reviewing to ensure loading and delivery needs met

Check out SDOT's Street Use program for more info:

www.seattle.gov/transportation/permits-and-services/permits/temporary-permits



Parking Enforcement to SDOT

- Mayor Durkan announced Parking Enforcement will move from SPD to SDOT in 2021
- Provides SDOT with opportunities to better align curbspace policy with compliance
- Much more to come on organizational components

Discussion – Questions

- How is it going for neighborhoods, businesses, customers?
- Are there ways that Curbside Management team can help? Others in SDOT?
- Suggested topics for future meetings?

Questions?

MaryCatherine.Snyder@seattle.gov

Mike.Estey@seattle.gov

www.seattle.gov/parking

