

# BLOCK 7 POCKET PARK

CONCEPT DESIGN

# YESLER TERRACE CONTEXT - 2020



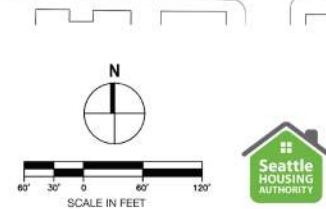


# YESLER TERRACE OPEN SPACE NETWORK



- 1** BLOCK 3 POCKET PARK  
-LANDFORM PLAY  
-PLAZA  
-ART
- 2** BLOCK 7 POCKET PARK
- 3** BLOCK 5 POCKET PARK
- 4** 10TH AVENUE HILLCLIMB  
-SITTING  
-VIEWS
- 5** YESLER TERRACE PARK  
-SPRAYPARK  
-EVENT LAWN  
-RAVE SOCCER SPOT  
-BASKETBALL COURT  
-PLAYGROUND  
-PLAZA  
-ART  
-PUBLIC RESTROOMS
- 6** THE HILLCLIMB  
-PAUSE POINTS  
-VIEWS
- 7** THE GREEN LOOP  
-PAUSE POINTS  
-EXERCISE STATIONS
- 8** P-PATCH

**LEGEND**  
 X.X Site Number  
 - - - The Green Loop  
 . . . The Hillclimb



YESLER TERRACE REDEVELOPMENT  
 May 2017

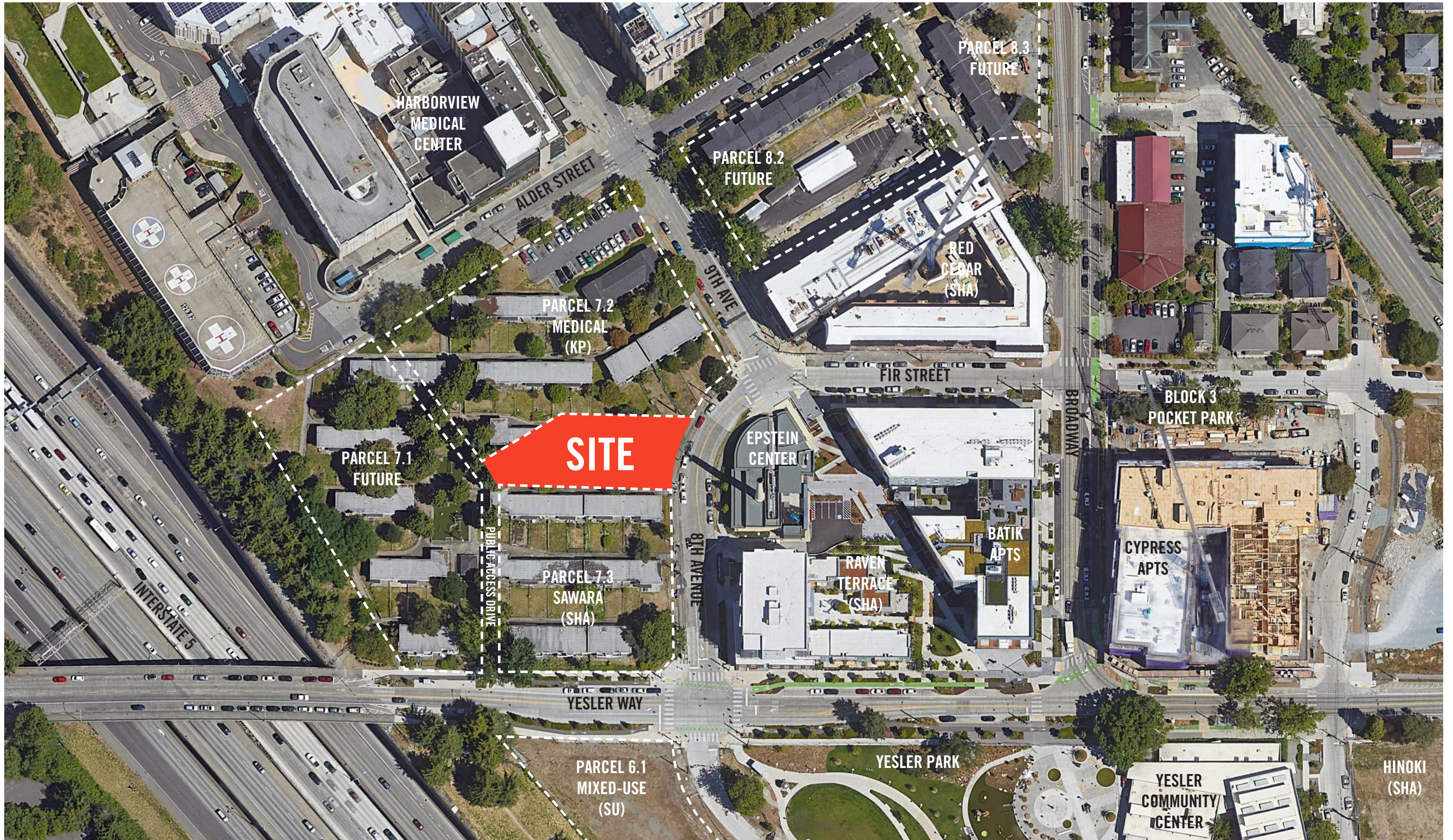
# POCKET PARKS - STREET VACATION AND PUBLIC BENEFIT CONDITIONS

## STREET VACATION CONDITIONS:

- Each park must be at least 12,000 SF and have 70 LF of frontage on a public street
- Park design to receive SDC guidance at SD and DD phases
- Design for greater public, not just adjacent or Yesler Terrace residents
- Passive space for sitting, visiting, looking at views, or reading
- Active space for play focused on children
- Street furniture, play facilities, and pedestrian-level lighting
- No reserved seating
- Park is open to public
- No community gardening space in pocket park



# SITE + CONTEXT





SEATTLE PUBLIC UTILITIES  
PROJECT MANAGEMENT AND ENGINEERING  
700 5TH AVENUE  
PO BOX 34018  
SEATTLE, WA 98124-4018  
(206) 233-7900

WATER:  
SEATTLE PUBLIC UTILITIES  
700 5TH AVENUE, SUITE 4900  
PO BOX 34018  
SEATTLE, WA 98124-4018  
(206) 684-3000

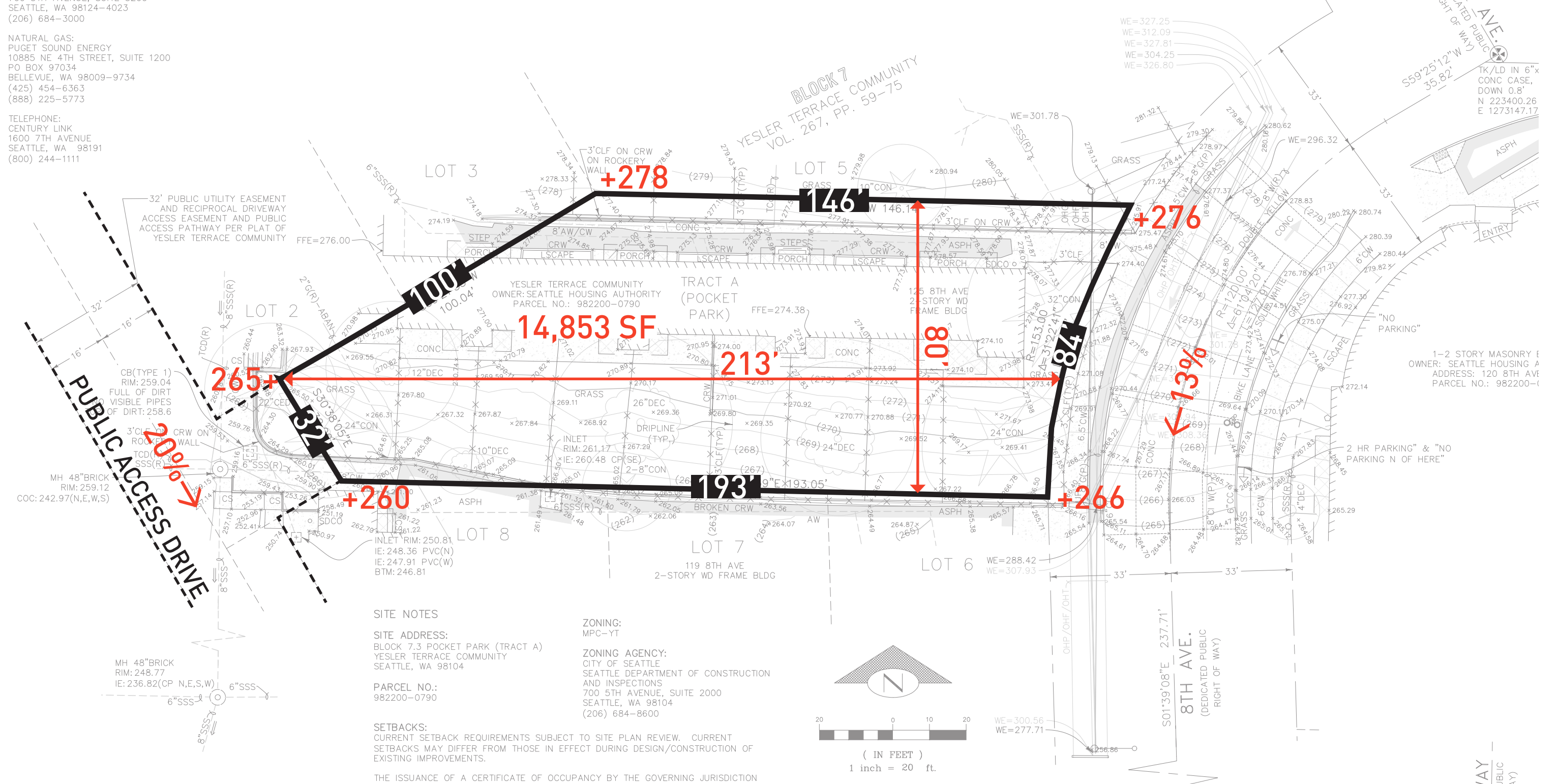
POWER:  
SEATTLE CITY LIGHT  
700 5TH AVENUE, SUITE 3200  
SEATTLE, WA 98124-4023  
(206) 684-3000

NATURAL GAS:  
PUGET SOUND ENERGY  
10885 NE 4TH STREET, SUITE 1200  
PO BOX 97034  
BELLEVUE, WA 98009-9734  
(425) 454-6363  
(888) 225-5773

TELEPHONE:  
CENTURY LINK  
1600 7TH AVENUE  
SEATTLE, WA 98191  
(800) 244-1111

# SITE + CONTEXT

WIRE ELEVATION NOTE:  
ELEVATIONS OF WIRES AT UTILITY POLES INCLUDE ONLY THE  
ELEVATIONS OF THE HIGHEST AND LOWEST WIRES AT THAT  
POLE.



### SITE NOTES

SITE ADDRESS:  
BLOCK 7.3 POCKET PARK (TRACT A)  
YESLER TERRACE COMMUNITY  
SEATTLE, WA 98104

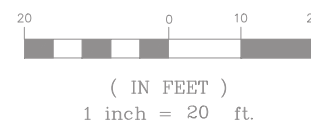
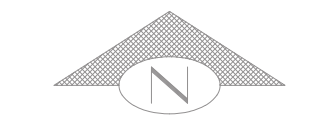
PARCEL NO.:  
982200-0790

SETBACKS:  
CURRENT SETBACK REQUIREMENTS SUBJECT TO SITE PLAN REVIEW. CURRENT  
SETBACKS MAY DIFFER FROM THOSE IN EFFECT DURING DESIGN/CONSTRUCTION OF  
EXISTING IMPROVEMENTS.

THE ISSUANCE OF A CERTIFICATE OF OCCUPANCY BY THE GOVERNING JURISDICTION  
INDICATES THAT STRUCTURES ON THIS PROPERTY COMPLIED WITH MINIMUM SETBACK

ZONING:  
MPC-YT

ZONING AGENCY:  
CITY OF SEATTLE  
SEATTLE DEPARTMENT OF CONSTRUCTION  
AND INSPECTIONS  
700 5TH AVENUE, SUITE 2000  
SEATTLE, WA 98104  
(206) 684-8600





# EXISTING TREES



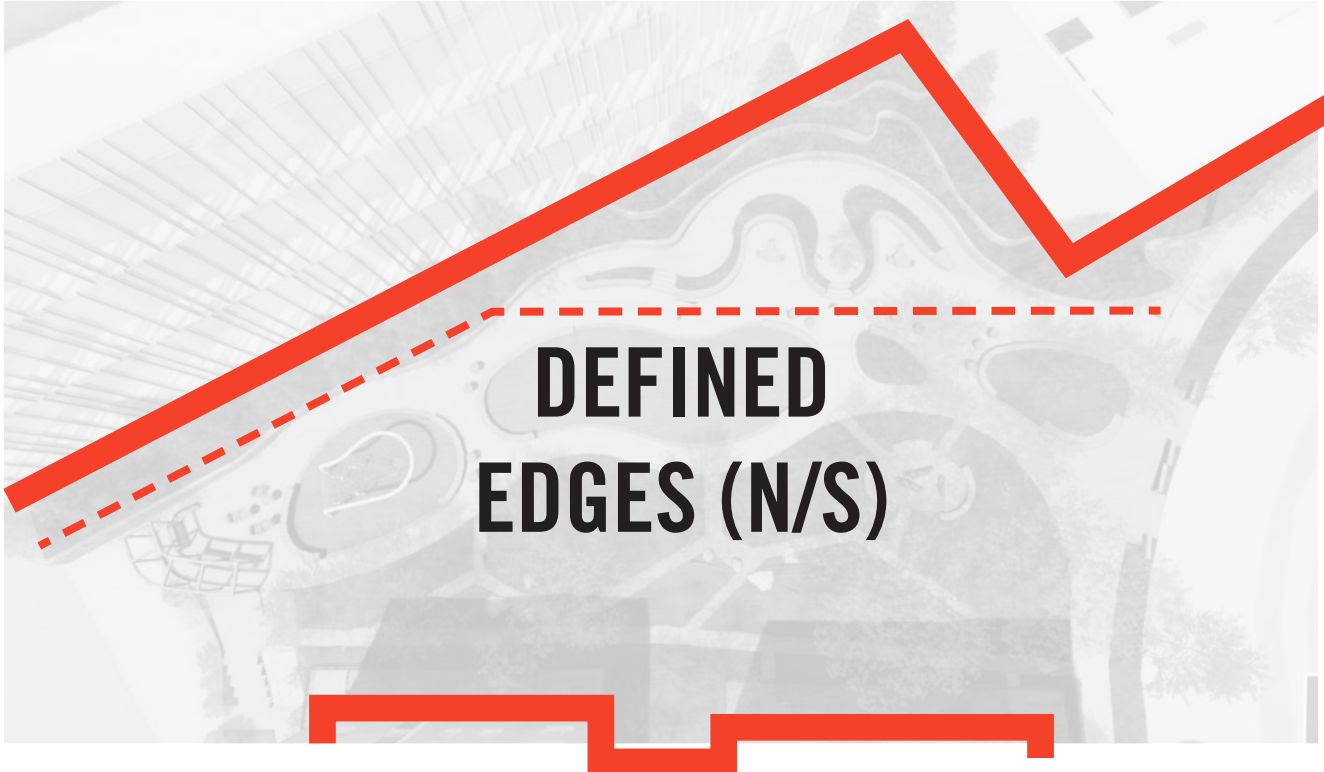


# CONCEPT EXPLORATION





# CONCEPT EXPLORATION





# DESIGN PROGRAM



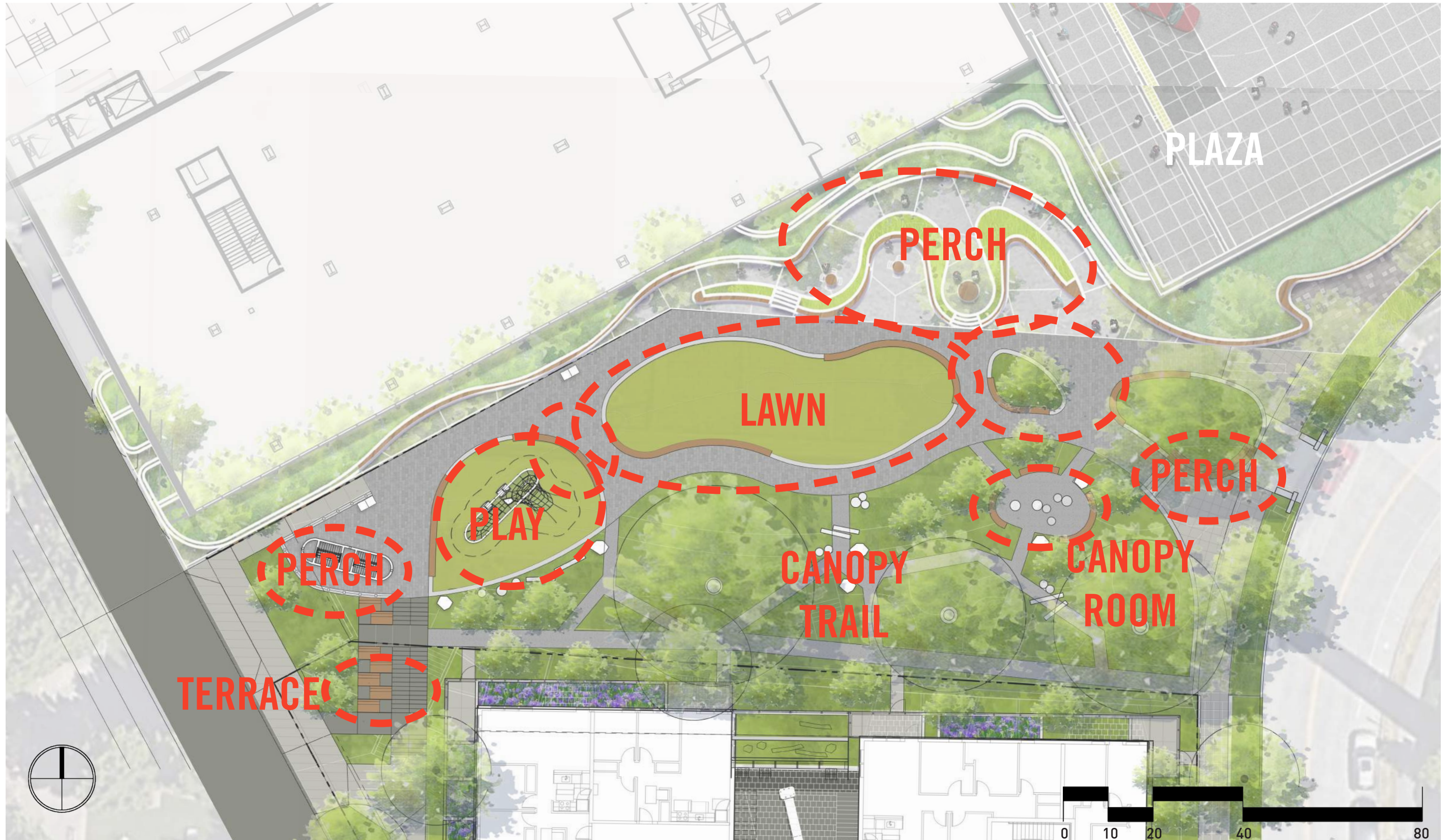


# SITE PLAN





# PROGRAM PLAN





# BIRDSEYE VIEW



BLOCK 7 POCKET PARK



# 8TH AVENUE LOOKING SOUTH



FUTURE MEDICAL BUILDING  
(DESIGN TBD)



# 8TH AVENUE LOOKING NORTH



BLOCK 7 POCKET PARK

SEATTLE HOUSING AUTHORITY & SITE WORKSHOP



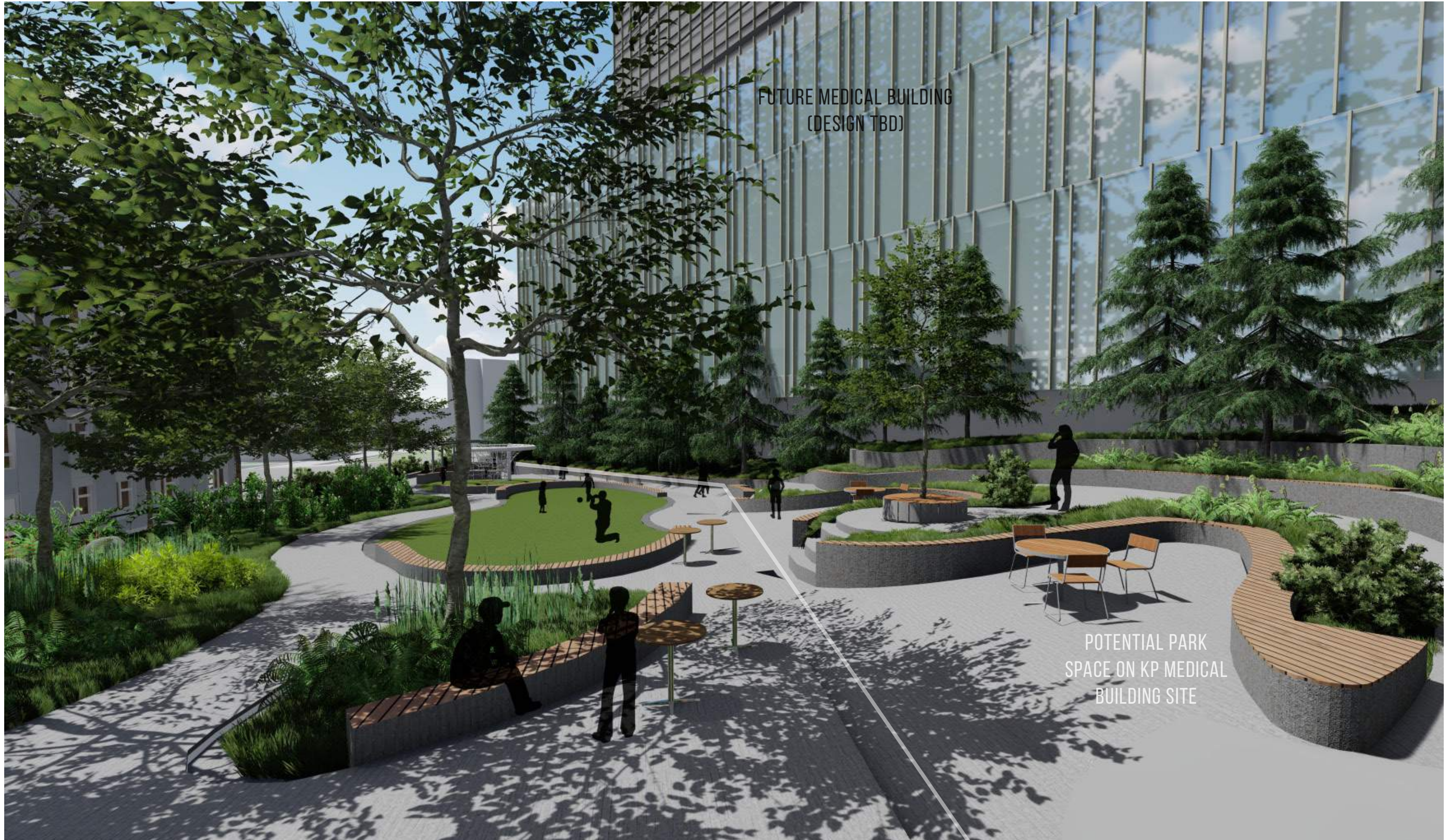
# CANOPY TRAIL



FUTURE MEDICAL BUILDING  
(DESIGN TBD)



# PLAZA + PERCH



FUTURE MEDICAL BUILDING  
(DESIGN TBD)

POTENTIAL PARK  
SPACE ON KP MEDICAL  
BUILDING SITE



# PLAZA + PERCH - INTERIM



BLOCK 7 POCKET PARK

SEATTLE HOUSING AUTHORITY & SITE WORKSHOP



FUTURE MEDICAL BUILDING  
(DESIGN TBD)





# PUBLIC ACCESS DRIVE





# CANOPY ROOM



BLOCK 7 POCKET PARK





# LIGHTING CONCEPT





**THANK YOU**



FUTURE MEDICAL BUILDING  
(DESIGN TBD)

BLOCK 7 POCKET PARK

SEATTLE HOUSING AUTHORITY & SITE WORKSHOP