

Urban Design & Public Space Committee Meeting

February 5, 2020

- **Welcome and Introductions**
- **Midtown Light Rail Station
Planning**
- **News and Updates**
 - **Terry Avenue**
 - **901 Madison Street**
 - **1300 Spring Street**

Midtown Light Rail Station Planning

Creating Connected Communities

—
Sound Transit Light Rail expansion in Seattle

Let's Talk About



- Sound Transit's light rail expansion in Seattle and the role each of us are playing
- The draft vision & guiding principles for the City's work
- Your current hopes and concerns about the light rail project and how to maximize the benefits in your neighborhood
- The upcoming conversation about planning investments in the station area and your neighborhood



14

new
stations



2

water
crossings

~12

miles of new track



a new tunnel
through
downtown



Roles



- Evaluate potential alignment and station locations.
- Conduct planning, environmental review, and design of the light rail system.
- Build and operate new light rail system.

Center racial equity for better outcomes
+
Co-planning stations with communities



Seattle

- Mayor Jenny Durkan & Councilmember Debora Juarez sit on the Sound Transit Board that will make final decisions.
- Plan housing, businesses, and open spaces to make great neighborhoods around new stations.
- Issue permits to Sound Transit to build stations and track.



Station



Station Context



Station Area

Your Impact

- Help inform Seattle decision makers over the next 2-3 years about station and track locations.
- Your input will help shape the changes in how your neighborhood looks and functions
- We will be having many conversations about how to set priorities for city investments and actions in station areas.



Current City Work to Support ST3

- Establishing strong relationships with Sound Transit to identify issues early and craft solutions
- Creating teams for permitting, planning, and public engagement
- Working to support delivering light rail faster and within budget
- Collaborating with Sound Transit on a Racial Equity Toolkit to center issues of race





Our Vision

A thriving, equitable city connected by a world class transportation system.

Dependable Transit

— Support efficient and reliable light rail service to your neighborhood that gets you where you need to go.

OBJECTIVES:

- Connects you to work, school, shopping, and recreation in other neighborhoods
- Integrates with robust transit service in your neighborhood
- Reduce number of cars on the road, improving travel times for all
- Allows efficient movement of freight
- Supports a safer transportation network and fewer collisions



Vibrant Communities

— Create opportunities for affordable housing and businesses located near stations that support your diverse community with more places for you to live, work, and shop.

OBJECTIVES:

- Draws people to the neighborhood and enhances community
- Supports more affordable homes and retail spaces
- Adds shared public areas like plazas and improves access to parks
- Improves public safety through active streetscapes
- Supports public art and the neighborhood culture



Climate Action

— Reduce our dependence on cars and give communities real, clean energy alternatives for transportation that reduces our impact on the changing climate.

OBJECTIVES:

- Reduces vehicle emissions, improves local air quality, and supports our climate action goals
- Incentivizes walking, biking, and bus riding through locating stations and city investments
- Limits parking near stations to encourage other options



Equity

— Race and social justice is the foundation for City decision-making on light rail expansion.

What is racial equity?

When social, economic and political opportunities are not determined by a person's race.

OBJECTIVES:

- Provides welcoming and comfortable light rail options for all, regardless of race
- Reduces short- and long-term negative impacts that disproportionately burden communities of color
- Provides access to transit regardless of language proficiency, physical ability, age, income, or other status



Things to think about. We'll circle back.

What feedback do you have on the City's guiding principles?

How can we make the station a positive change in your neighborhood?

What access improvements and other investments are needed in the station area?



What's Next?

The City wants to stay in touch with you on this and other topics.

This is the start. We will be back with more information and opportunities for further dialog.



Sign up to receive our email updates:
seattle.gov/lightrail



Sound Transit project updates:
soundtransit.org/wsblink

Thank you

Your name here

 206.555.5555  email@seattle.gov

Sound Transit: [soundtransit.org/wsblink](https://www.soundtransit.org/wsblink)
City of Seattle: [seattle.gov/lightrail](https://www.seattle.gov/lightrail)



Seattle

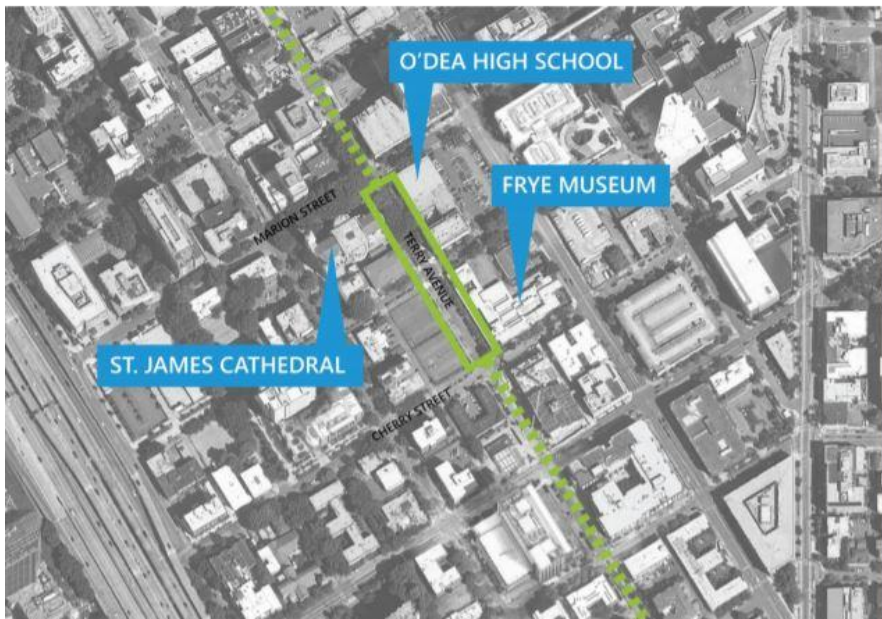
News and Updates

Terry Avenue

TERRY AVENUE

COMMUNITY VISION + SITE DEVELOPMENT

The Terry Avenue Vision Process and Site Development Plan is a community visioning and concept design process for the design of Terry Avenue between Cherry and Marion Streets. Building upon work completed through the 2015 First Hill Public Realm Action Plan (PRAP), the community-driven design will serve as a catalyst and template for the overall Terry Avenue redevelopment project.



Outreach Event #1: Set the Table

Thursday, Feb 13, 2020
5:30pm to 7:30pm

FRYE ART MUSEUM
704 Terry Avenue, Seattle, WA

Free & open to all!
RSVP info below

You're invited,

to take part in the ongoing design process for Terry Avenue - Phase 1, and to learn more about the different stakeholders and the project.

Join us to brainstorm what should happen in re-imagining the public realm in your neighborhood.

#TerryAveVision
www.firsthill.org
facebook @first hill improvement association

RSVP on our [Facebook](#) event site
"Set the Table - Outreach Event #1"
or directly on [Eventbrite](https://bit.ly/2u3LBMm) <https://bit.ly/2u3LBMm>

Learn & Discuss:

- How will this project transform First Hill Neighborhood?
- How will this project carry forward the vision from the First Hill Public Realm Action Plan?
- How will the process engage the community and different stakeholders?
- How will the new Terry Avenue integrate into the neighborhood and the community?
- The next steps in the process.



FIRST HILL
IMPROVEMENT ASSOCIATION



PARTNERSHIP
DLR Group **kpff**

901 Madison Street

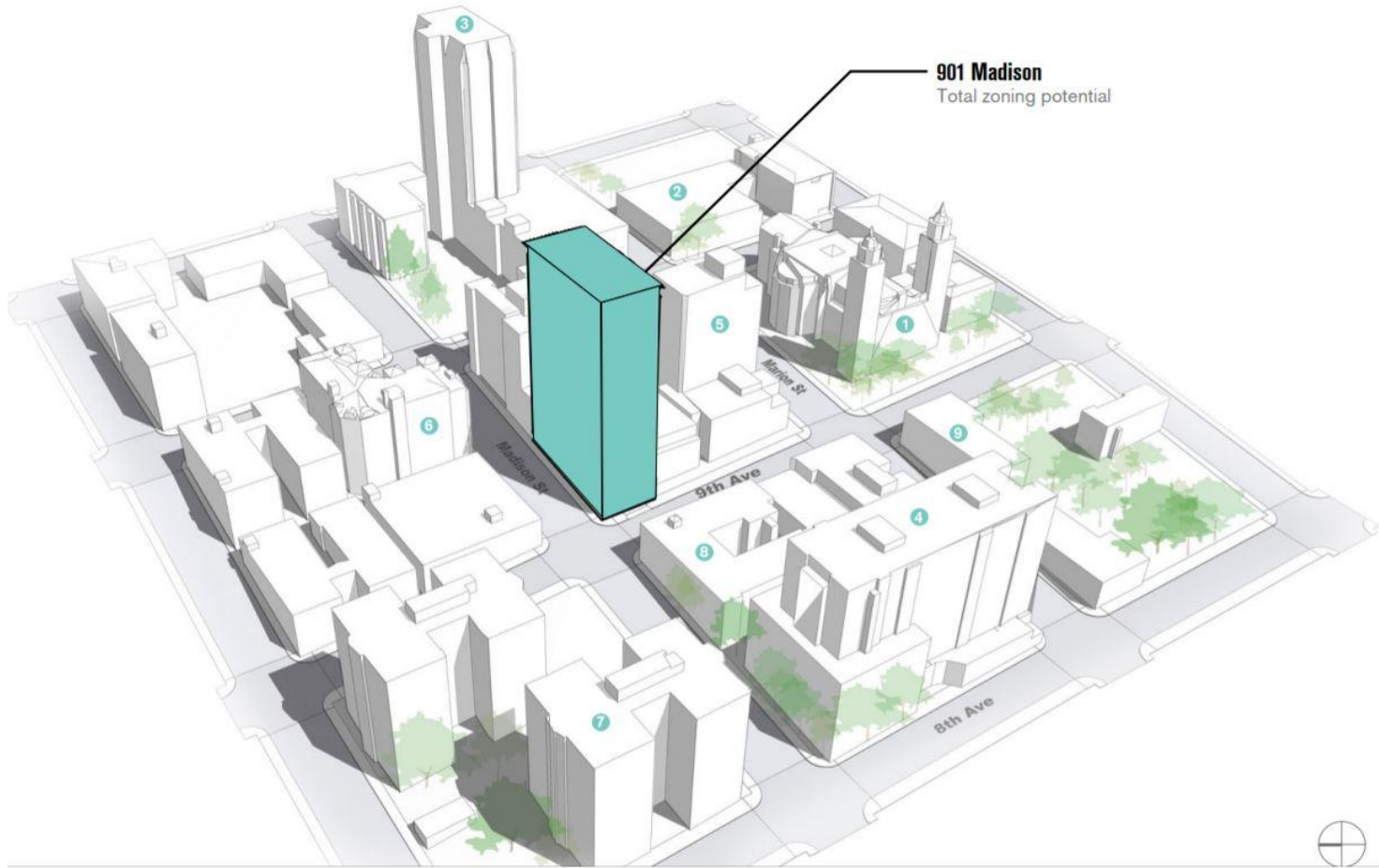


Early Design Guidance application for a 21-story 178- unit apartment building with retail. Up to 41 Affordable units.

Parking for 40 vehicles proposed.

Existing building to be demolished.

Design Review: 02/12 @ 5:30p at 824 12th Ave



Option 1



Option 2



Option 3: Preferred Scheme





MADISON ST



1300 Spring Street

Land Sale: Proposal for a 25-story 390-unit apartment building with 3,900 square feet of retail.

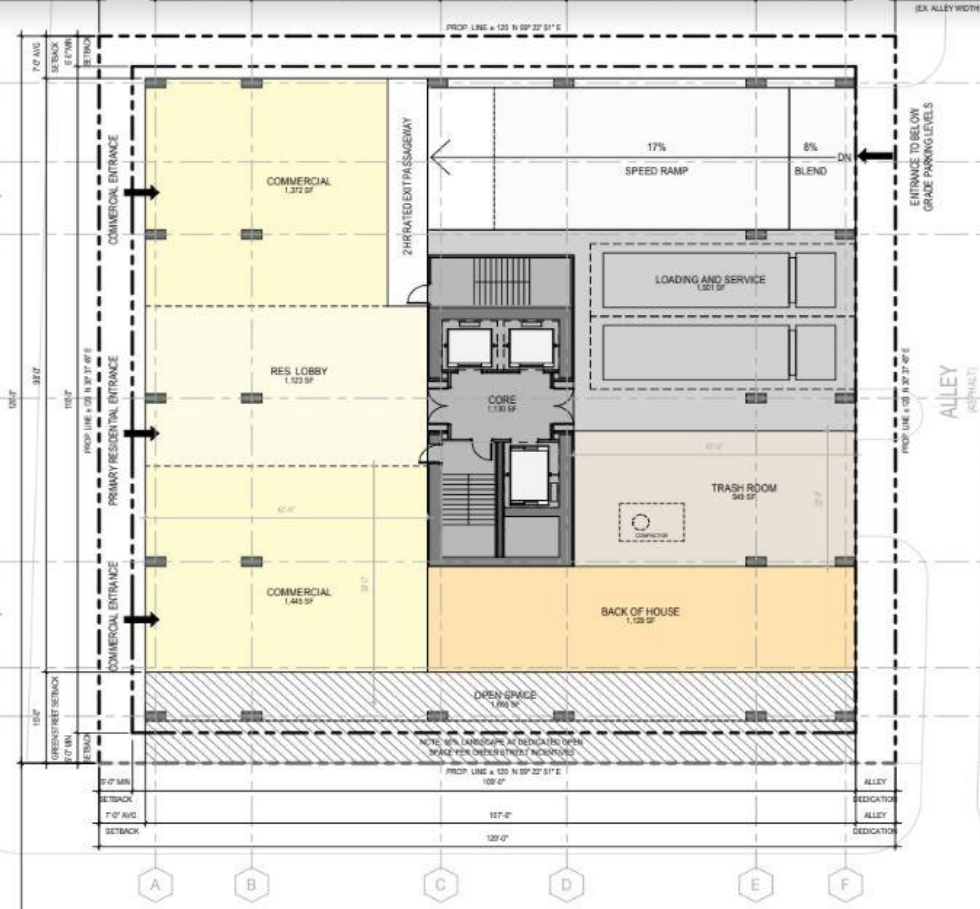
Parking for 60 vehicles proposed.

Existing building to be demolished.

SUMMIT AVE
(ASPHALT)

1
B-DS-20

2
B-DS-20



2 HOURS EXIT PASSAGEWAY

17% SPEED RAMP

8% BLEND DN

ENTRANCE TO BELOW GRADE PARKING LEVELS

ALLEY
(ASPHALT)



8'0" (ROW WIDTH)

SPRING STREET
(ASPHALT)



NOTE: 60% LANDSCAPE AT DEDICATED OPEN SPACE FOR UNDERGROUND TROUBLESHOOTING

PROP. LINE = 125' N 89° 22' 51" E 108' 0"

117' 0"

128' 0"

ALLEY DEDICATION

ALLEY DEDICATION

ALLEY DEDICATION

Become a FHIA Member!

Keep your eyes peeled, we sent out invoices

Mark your Calendars!

- **02/12 - 901 Madison Design Review @ 6:30p @ 824 12th Avenue (Stuart T Rolfe Room)**
 - **02/13 - Terry Avenue Community Visioning @ 5:30p @ the Frye Art Museum**
 - **02/24 - Swedish Standing Advisory Committee Meeting @ 5:30p @ 747 Broadway (Swedish Hospital)**
-