

Urban Design & Public Space Committee Meeting

December 4, 2019

- Welcome and Introductions
- 707 Terry Presentation
- News and Updates
 - First Hill Tree Canopy / Flexible Pavement
 - Your Voice, Your Choice Results
 - First Hill Updates

Introduction to Westbank



*Building*Artistry

westbank

707 Terry Project

Project Statistics:

Architect:	Perkins&Will
Contractor:	Graham Construction
Site Size:	27,000 sf
Project Total Size:	605,000 sf
Projected First Occupancy:	December 2020
Projected Completion:	Spring 2021
Podium Levels:	2 floors
2 Residential Towers:	28 floors
Residential Apartments:	506 Units
At-grade Retail	: 6,500 SF







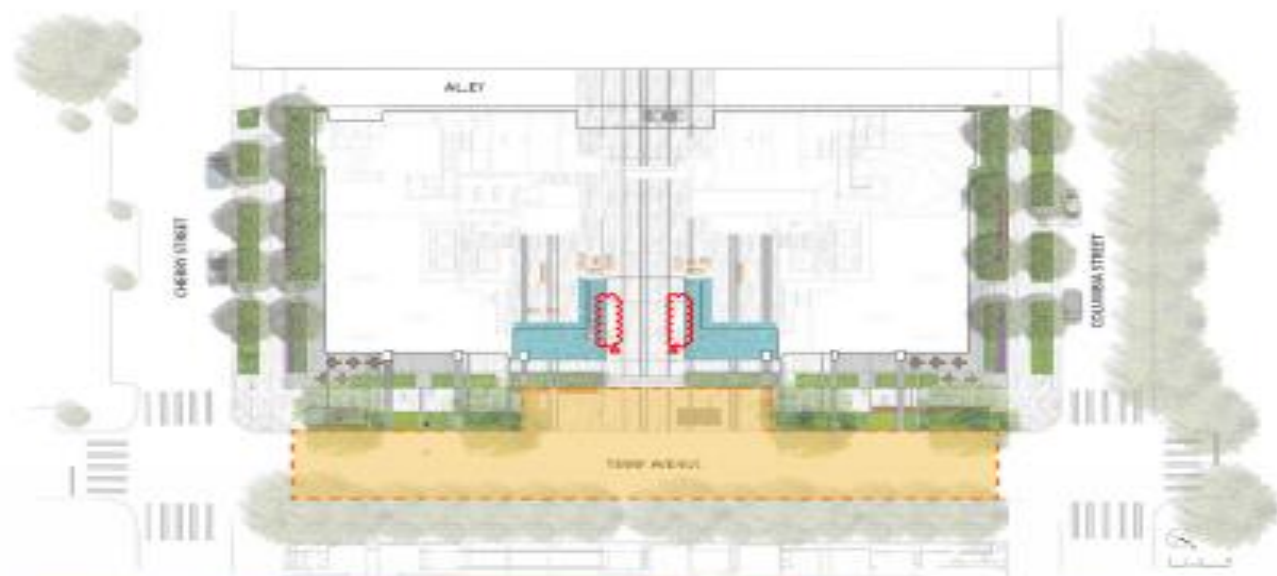




WERK

A modern glass skyscraper with a bridge connecting two towers, set against a sunset sky over a body of water. The building features a grid-like facade of windows and balconies. The sky is filled with soft, golden clouds, and the water in the foreground is calm. The overall scene is serene and architectural.





CONCERT



WINE TASTING



OUTDOOR FILM



COMMUNITY DINNER



ART EXHIBIT



ART MARKET / FAIR



FOOD TRUCK FESTIVAL



FUNDRAISING



TEMPORARY SCULPTURE GARDEN



HOLIDAY LIGHT

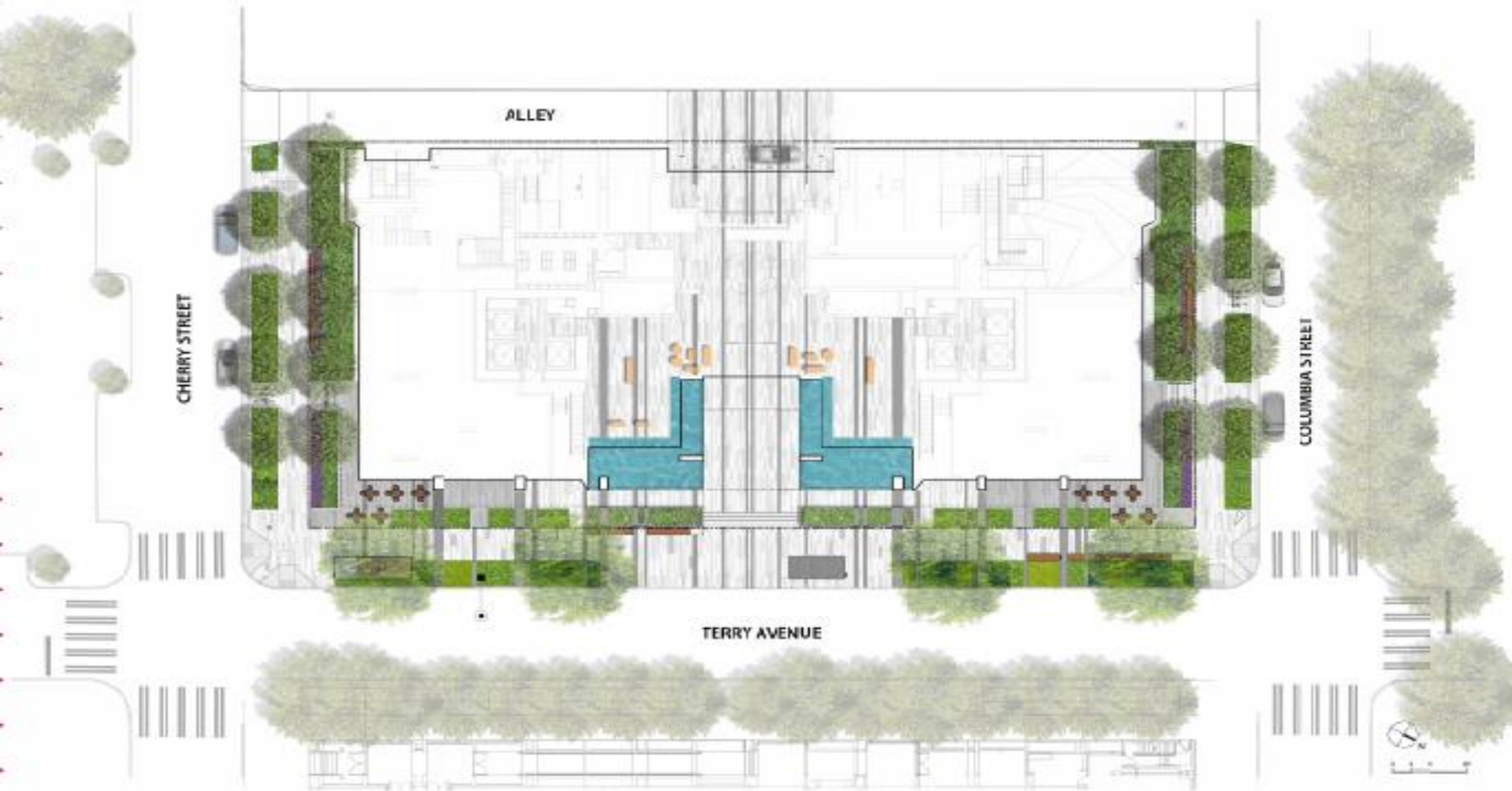


DAILY USE



Space Available For Public Events With Temporary Street Enclosure on Terry.

The public events shown are only for the purpose of demonstrating how the proposed frontage on 707 Terry could tie into a community event during a temporary street closure. Actual event planning and street closure is by others and not part of this project.



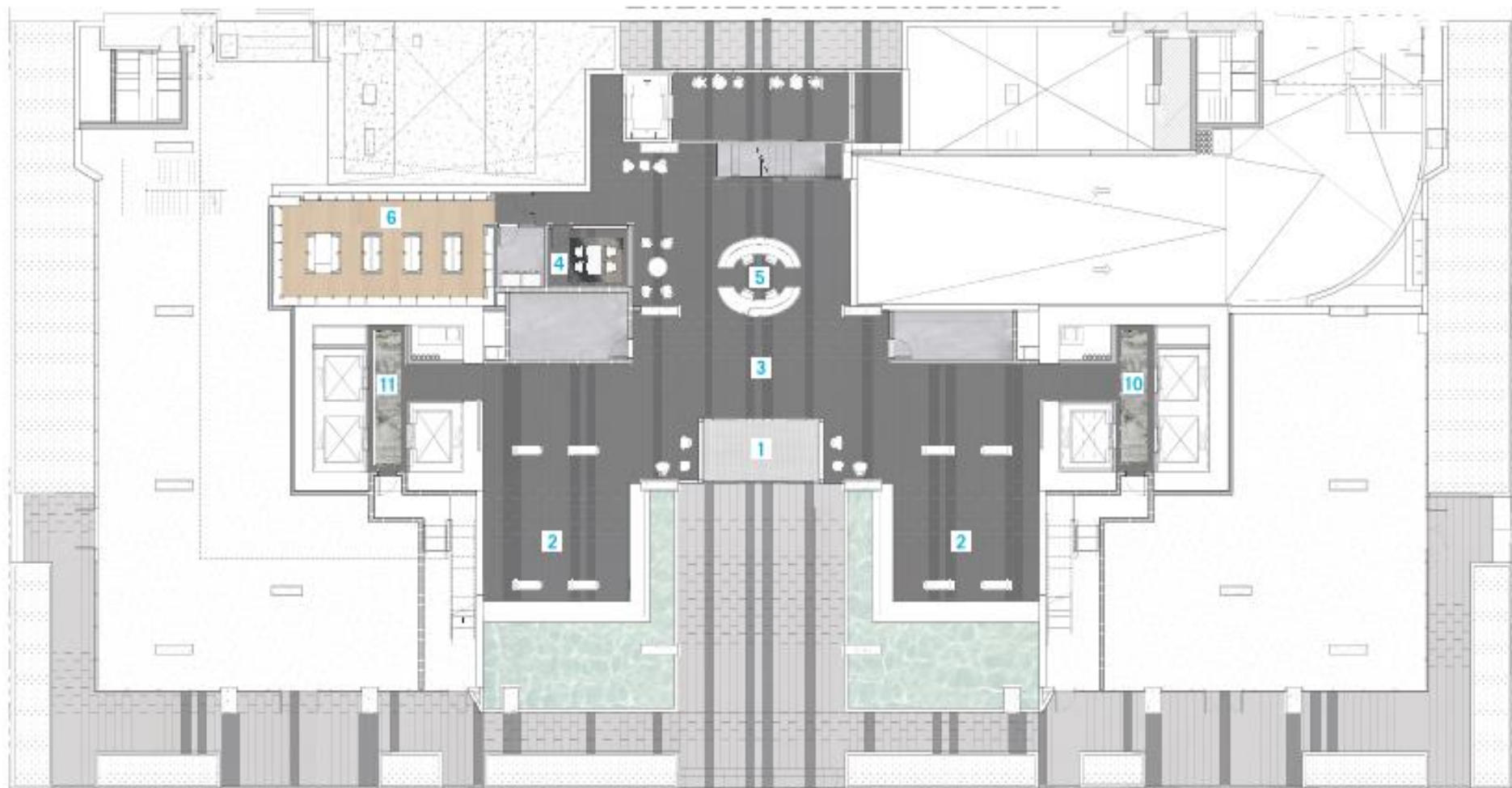
ALLEY

CHERRY STREET

COLUMBIA STREET

TERRY AVENUE



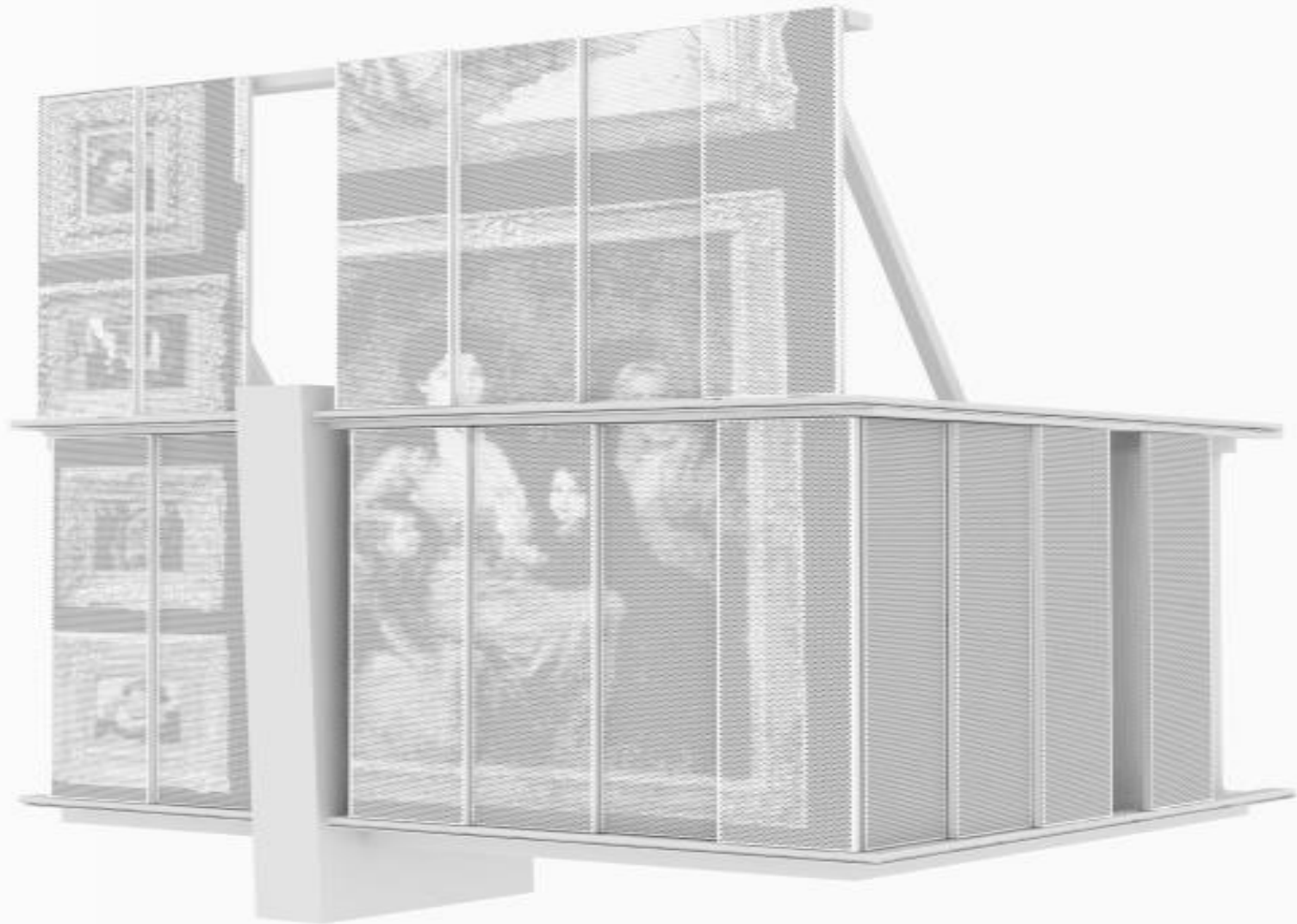


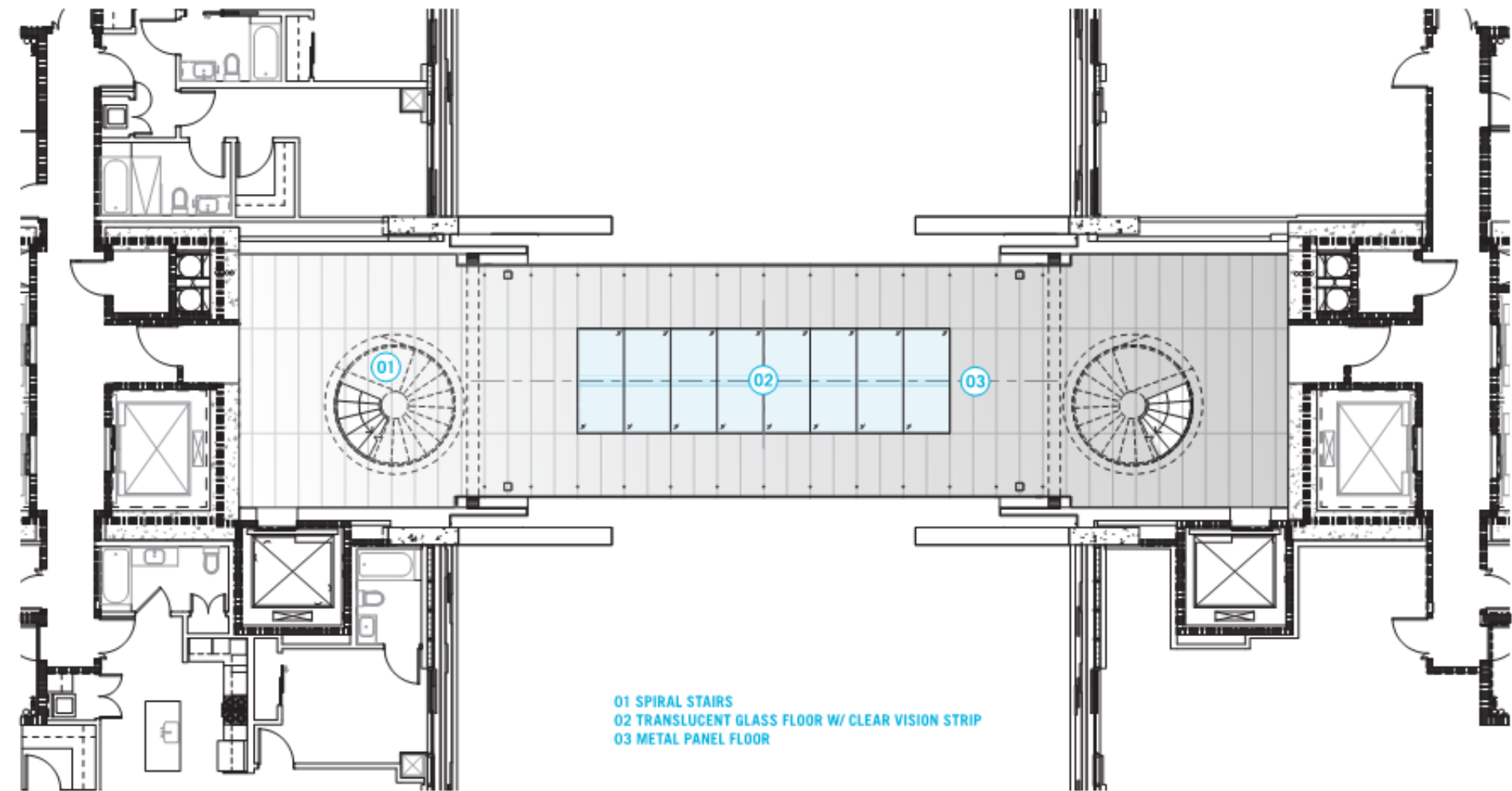




NORTH TOWER







- 01 SPIRAL STAIRS
- 02 TRANSLUCENT GLASS FLOOR W/ CLEAR VISION STRIP
- 03 METAL PANEL FLOOR















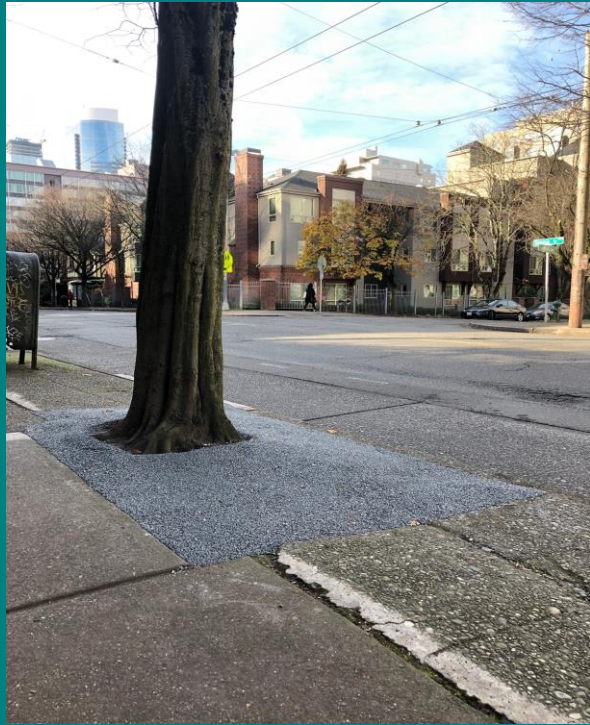






News and Updates

First Hill Tree Canopy / Flexible Pavement



Flexible Pavement Locations

- 8th and Seneca (in front of: the Emerson, Royal Manor, Primo, and Hans Deli)
- Summit and Seneca (in front of: Therapeutic Health Services)
- Boylston and Seneca (in front of: the Manhattan and the Maxmillian)

First Hill Updates

After being hit by a car during February's snow storm, 9th and Madison got a new signal box and artwork!

The Summit and Madison signal box will be replaced soon with artwork.



First Hill Updates

Harborview Hall's shelter has been expanded to a 24/7 facility.

The updated facility includes:

- Showers
- Laundry
- Pets
- Caseworkers
- Companions



Your Voice, Your Choice

- THANK YOU to everyone who participated. Crossing Improvements on the intersection of Union Street, Minor Ave, and Bellevue Ave WON (Cost: \$90,000; Votes received: 330)!
 - Idea collection for 2020 begins next month, so send your ideas to Doug to submit for next year.
-

Your Voice, Your Choice

Improvements
coming soon!



First Hill Updates

TrüBistro at Terry and James is now open!



First Hill Updates

SDOT recently installed median barriers at Terry and James.

Left turns are no longer allowed.



First Hill Updates

1103 Summit is moving right along. Windows are being installed.



First Hill Updates

Kelleher House is getting a paint job!



First Hill Updates

The Mill's Live/Work units are nearly complete at 8th and Madison.



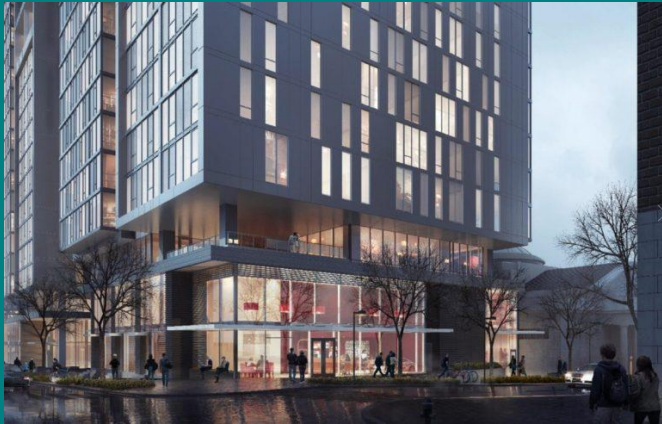
First Hill Updates

First Presbyterian applied for a demolition permit last month. 152 parking spaces will replace the church, construction offices for 1101 8th Ave, and Compass at First Hill. Timeline unknown.



First Hill Updates

1101 8th Avenue (the Ovation towers) continue to make progress.



First Hill Updates

Digging has started
for 615 8th Avenue
(the Olympic Tower)



First Hill Updates

800 Columbia will install a crane this weekend.



First Hill Updates

Old Fire Station #2 is undergoing improvements.



**Become a FHIA
Member!**

Mark your Calendars!

- 12/04 - Hotel Sorrento Silent Reading Party
 - 12/06 - Twinkle, Twinkle Freeway Park
 - 12/07 - WTO Protests 20th Anniversary with Joseph Stiglitz at Town Hall
 - 12/14 - Murano Holiday Celebration
 - 12/19 - Third Thursday Happy Hour at the Frye
-